



Thinking Out of the Box Engineering Applications



Independent sea access for people with mobility issues

www.seatrac.gr

seatrac mover

Independent sea access for people with mobility issues

TOBEA

BEFORE USING SEATRAC MOVER:

- The device is ready to be used when the green light is on.
- If the red light is on, do not use it to enter the sea.
- Make sure that there are no obstacles within the seat trajectory.
- Do not use it if the sea level is above its seat while the seat is on the terminal sea point.
- During usage you should be alert to prevent possible accidents or damages.
- Make sure that the device is not used under extreme weather conditions and sudden waves.
- SEATRAC MOVER is a remote controlled device. Please find the remote control before embarking.
- The person responsible for its use, conducts a complete test run (to the sea and back) before the users sit on its seat.
- Conduct a visual inspection of the device. Do not use it if there are deformed or damaged parts and/or missing components.
- SEATRAC'S usage concerns adults. The improper contact or use of the device is prohibited. Improper use causes damage. The violators will be prosecuted.

HAVE FUN!

seatrac™ mover coating



Ral 5024



Ral 1019



Ral 9006



Ral 6019

Brief Description

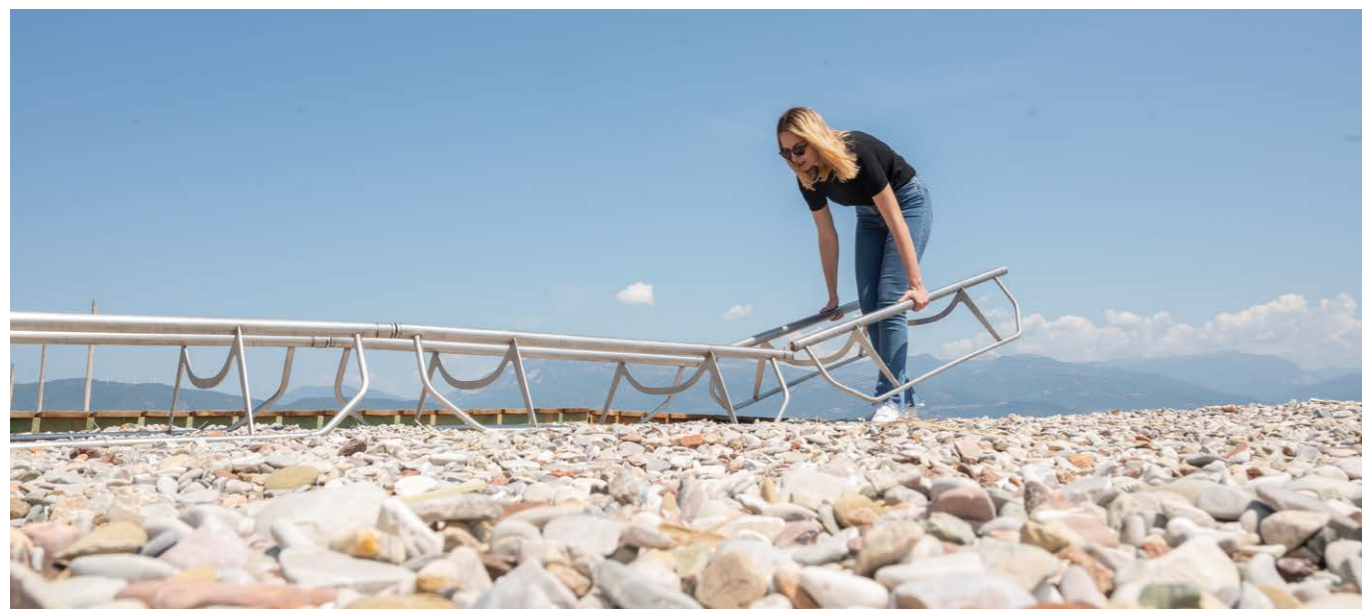
Offers people with disabilities and mobility issues **independence and unassisted sea access.**

Easy to install.

It only takes a few minutes to place it on the beach or dismantle it and store it.

It can be removed from the beach **without dismantling it** and no one needs to get wet.

Ideal for **tidal beaches and sudden changes in weather conditions.**



Main Features



Autonomous sea access



Self-diagnosis system for Long distance troubleshooting



Environmentally friendly

Use of renewable energy sources

Does not alter the beach



Remote control



Safety lighting at night time



Ergonomic seat



Easy to install



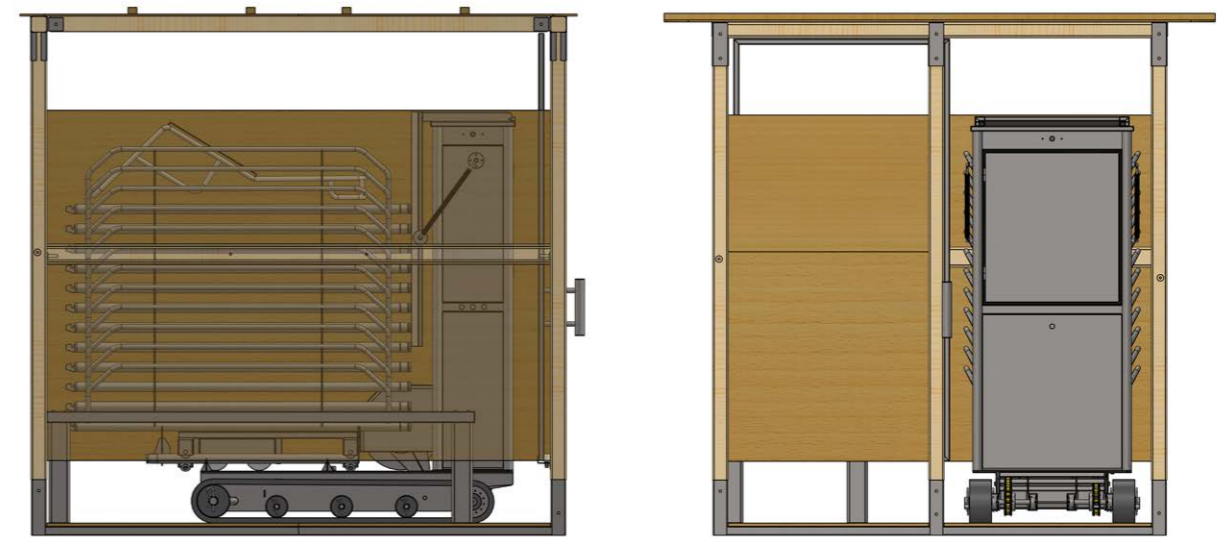
Mobile

INNOVATION
Artificial Intelligence to protect privacy

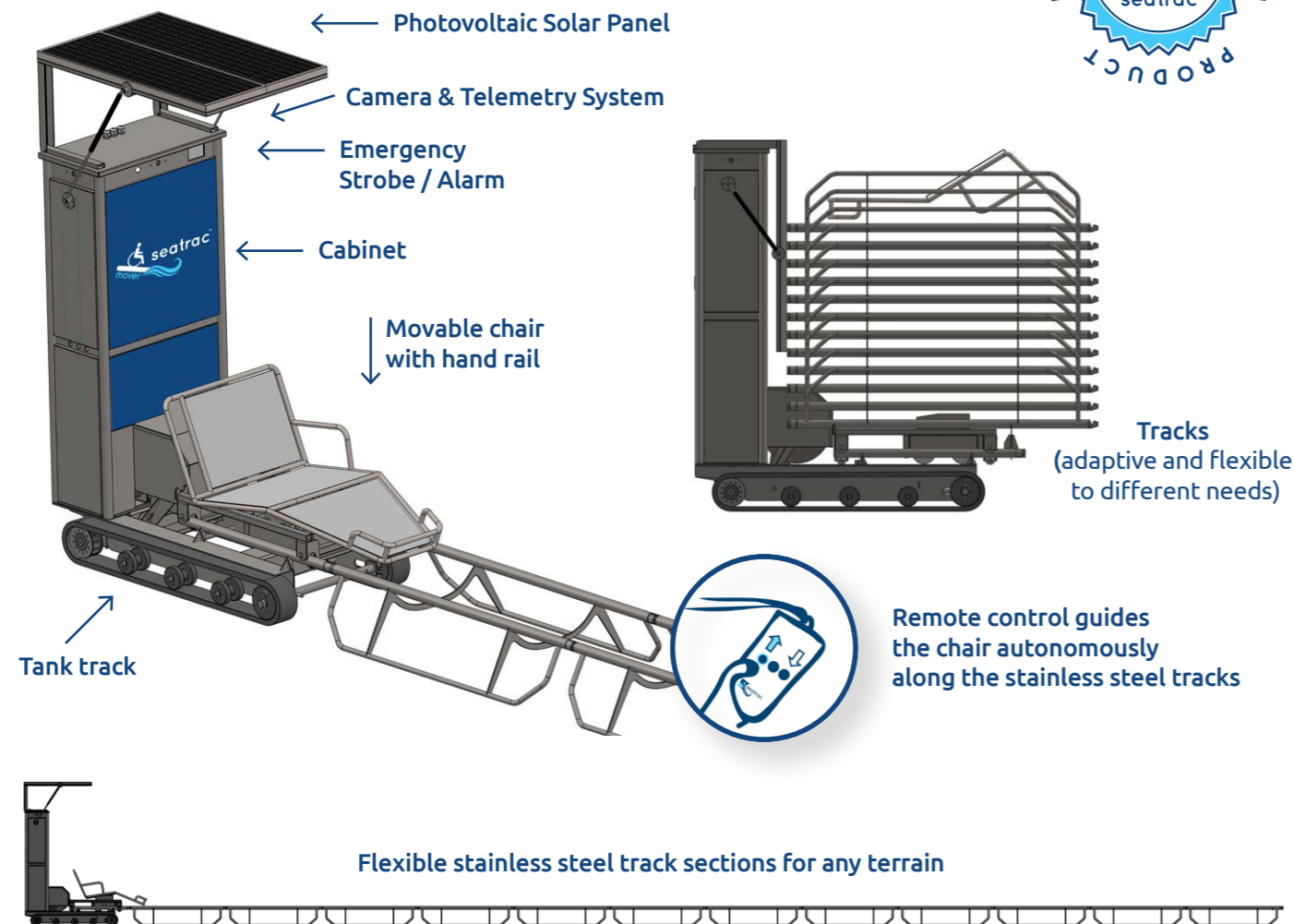
seatrac™ mover specifications mover

Storage mode	2,05m x 0,80m x 1,90m (LxWxH)
Rail length	1,50m
Voltage	24VDC
Charging options	Plug in to the grid 220VAC/110VAC, or Embedded solar panel
Load capacity	150 Kgr
Embedded chair	Travel speed < 0.15m/s Chair height at shore end: 0,48m (adjustable ±0,03m)
Main features / operations	The device with its tracks has the ability to move itself along various ground types It operates via remote control by the user or the operator

Optional: Storage / Changing room



seatrac™ mover parts



A day with seatrac™ mover



- 1 Starting the day**
 1. Access the device from storage
 2. Check if it is charged
 3. Move it to the beach
 4. Untie the track sections
 5. Assemble the track sections
 6. Unfold the solar panel
 7. Drive it to the appropriate depth of about 80 cm with chair position at end of track with color coded handrail in water
- 2 During the day**
 - a. Check tide levels several times during the day
 - b. Adjust seatrac™ mover to right depth
- 3 At the end of the day**
 - a. Disassemble the device
 - b. Move it to storage room
 - c. (Optional) Plug in charger

Services

TOBEA, with end user information and feedback about satisfaction, created services that improve people's visit to the beach.

Helpdesk

Free service for all end users and clients

09.00-17.00, Monday - Friday
tel.: +30 2610 876000

Maintenance

After the first year of use.



Accessibility Chain



Parking Area



Beach Track



Restroom



Changing room (collapsible, non-permanent structure)



Shaded Area



More information in www.tobea.gr

TOBEA Network



Canada Croatia Cyprus France Italy Lithuania Romania Spain Turkey UAE UK USA

... Loading more

Founded in 2012

Mission: We create innovative tools to make the world an accessible place for ALL

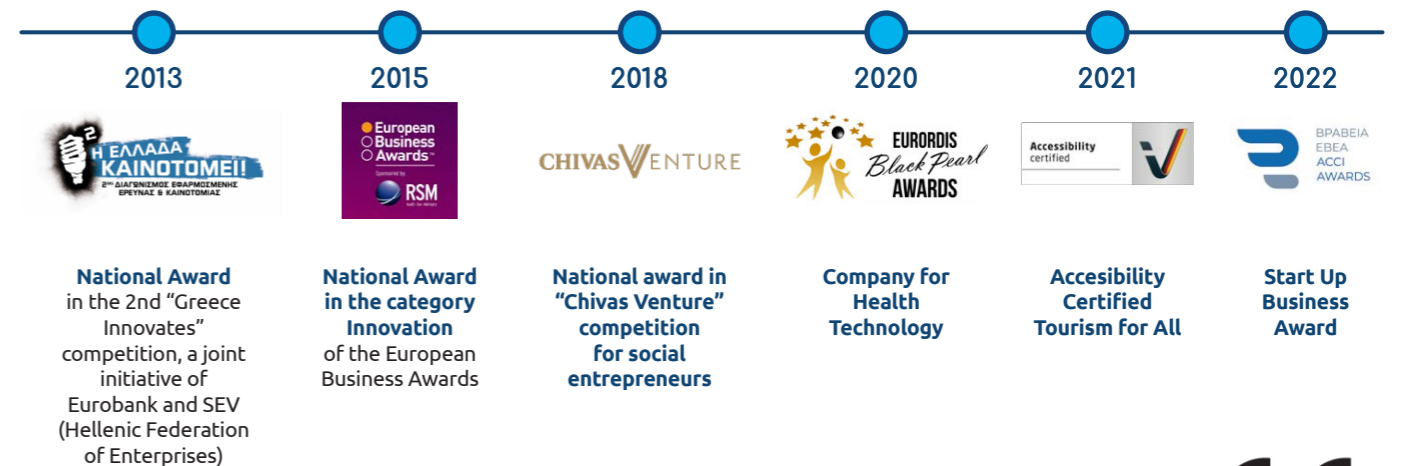
Vision: Starting from making any type of beach around the globe accessible, TOBEA keeps innovating for those who are facing problems. Our goal is to create new tools for accessibility.

Quality management systems: ISO 9001:2015 - ISO 14001:2015 - ISO 45001:2018 - ISO 27001:2013

Patents

- ✓ Greece (Patent No.1008398)
- ✓ European Union (Patent No. EP 2539509)
- ✓ USA (Patent No. US 9,127,411 B2)
- ✓ Community Trade Mark identification no. 012587887 registered 25/11/2014
- ✓ Industrial design no. 003851039-0001/003851039-0002 and 001463871-0001.

Awards





More information in:
www.tobea.gr



More information in:
www.seatrac.gr

 Parodos Stadiou, Kato Kastritsi
Patras, Greece 26504

 +30 2610 93 22 40

 info@tobea.gr

TOBEA   

www.seatrac.gr

www.tobea.gr